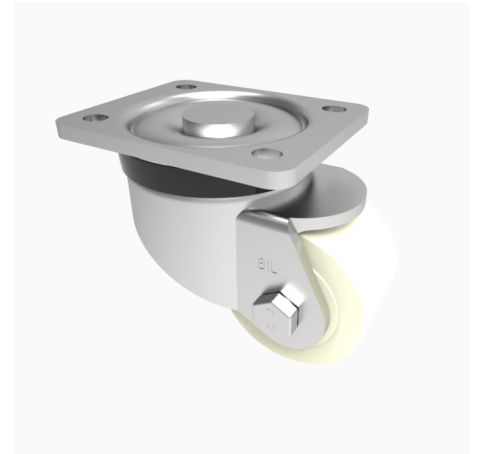


## Nylon Plate Swivel Castor 125mm 800kg Load

**Product code: BZXP125NYBJHD**

Pressed steel swivel castor with a top plate fixing fitted with a white nylon wheel with ball bearings. Wheel diameter 125mm, tread width 45mm, overall height 165mm, top plate 105mm x 86mm, hole centres 80mm x 60mm. Load capacity 800kg.



Diameter (mm)	125
Castor Type	Swivel
Fixing Option	Plate
Height (mm)	165
Wheel Material	Nylon
Colour / Shore Hardness	White Nylon
Temperature Resistance	-30 °C TO +80 °C
Bearing Type	Ball
Load Capacity (kg)	800
Tread (mm)	45
Swivel Radius (mm)	108
Plate Size (mm)	105 x 86
Hole Centres (mm)	80 / 77 X 60
Top Plate Thickness (mm)	6
Fork Thickness (mm)	5
To Suit Fixing Bolt (mm)	8

## BIL GROUP LTD

Porte Marsh Road, Calne, Wiltshire, SN11 9BW

Registered in England No: 2603821

VAT Reg: GB572705729

