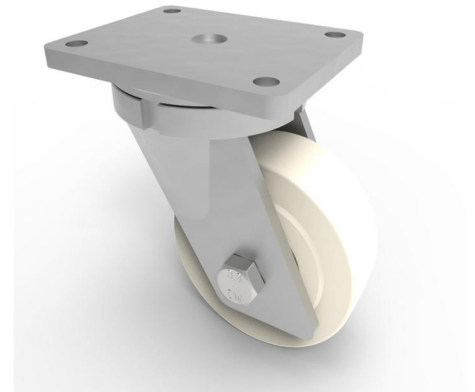


Nylon Plate Swivel Castor 150mm 2500kg Load

Product code: BZQ150NYBJ

Fabricated swivel castor with a flat plate fixing fitted with a white nylon wheel with ball bearings, Wheel diameter 150mm, tread width 55mm, overall height 212mm, plate size 175mm x 140mm, hole centres 140mm x 105mm. Load capacity 2500kg.



Diameter (mm)	150
Fixing Option	Plate
Castor Type	Swivel
Bearing Type	Ball
Height (mm)	212
Plate Size (mm)	170 X 140
Hole Centres (mm)	140 X 105
To Suit Fixing Bolt (mm)	14
Wheel Material	Cast Nylon
Colour / Shore Hardness	White Cast Nylon / 60 - 90 Shore D
Temperature Resistance	-30 °C TO +80 °C
Top Plate Thickness (mm)	12
Fork Thickness (mm)	10
Swivel Radius (mm)	128
Load Capacity (kg)	2500
Tread (mm)	55

BIL GROUP LTD

Porte Marsh Road, Calne, Wiltshire, SN11 9BW

Registered in England No: 2603821

VAT Reg: GB572705729

