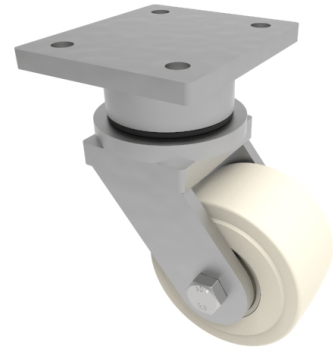


Nylon Plate Swivel Castor 150mm 2500kg Load

Product code: BZU150NYBJ



Fabricated swivel castor with a flat plate fixing fitted with a white nylon wheel with ball bearings. Wheel diameter 150mm, tread width 80mm, overall height 264mm, plate size 178mm x 153mm, hole centres 127mm x 102mm. Load capacity 2500kg. ****MANUFACTURED TO ORDER****

Diameter (mm)	150
Fixing Option	Plate
Castor Type	Swivel
Bearing Type	Ball
Height (mm)	264
Plate Size (mm)	178 X 153
Hole Centres (mm)	127 x 102
To Suit Fixing Bolt (mm)	16
Wheel Material	Cast Nylon
Colour / Shore Hardness	White Cast Nylon / 60 - 90 Shore D
Temperature Resistance	-30 °C TO +80 °C
Swivel Radius (mm)	146
Load Capacity (kg)	2500
Tread (mm)	55

BIL GROUP LTD

Porte Marsh Road, Calne, Wiltshire, SN11 9BW

Registered in England No: 2603821

VAT Reg: GB572705729

