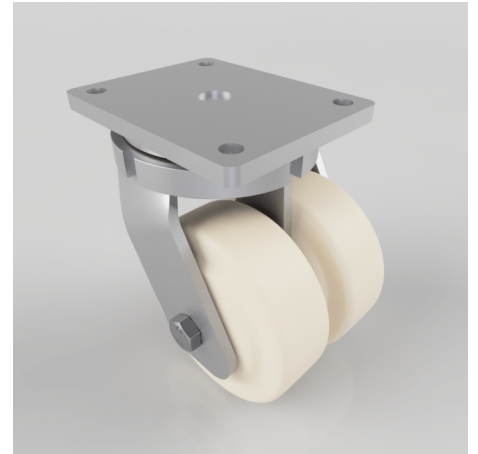


Nylon Plate Swivel Castor 150mm 3000kg Load

Product code: 2BZQ150NYBJHD

Fabricated swivel castor with a flat plate fixing fitted with 2 x heavy duty white nylon wheels with ball bearings. Wheel diameter 150mm, tread width 50mm x 2, overall height 225mm, plate size 170mm x 140mm, hole centres 140mm x 105mm. Load capacity 3000kg



Diameter (mm)	150
Fixing Option	Plate
Castor Type	Swivel
Bearing Type	Ball
Plate Size (mm)	175 X 140
Hole Centres (mm)	140 X 105
Height (mm)	212
Swivel Radius (mm)	140
To Suit Fixing Bolt (mm)	14
Wheel Material	Nylon
Colour / Shore Hardness	White Nylon
Temperature Resistance	"-30 °C TO +80 °C
Tread (mm)	2 x 50
Load Capacity (kg)	3000
Top Plate Thickness (mm)	12
Fork Thickness (mm)	8

BIL GROUP LTD

Porte Marsh Road, Calne, Wiltshire, SN11 9BW

Registered in England No: 2603821

VAT Reg: GB572705729

