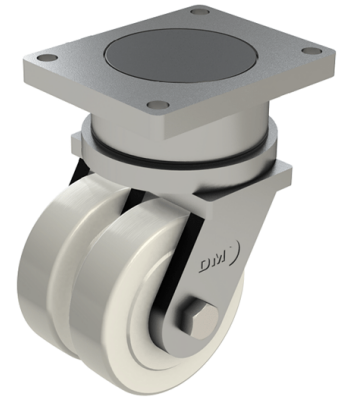


## Nylon Plate Swivel Castor 150mm 4500kg Load

**Product code: T150NYBJ**

**POA** Heavy duty fabricated twin wheel swivel castor fitted with 2 x cast machined nylon wheels with ball bearings, Wheel diameter 150mm, Tread width 55mm x 2, Overall height 270mm, Top plate 250mm x 200mm, Hole centres 210mm x 160mm, Load capacity 4500kg **\*\*MANUFACTURED TO ORDER\*\***



Diameter (mm)	150
Fixing Option	Plate
Castor Type	Swivel
Bearing Type	Ball
Plate Size (mm)	250 x 200
Hole Centres (mm)	250 x 200
Height (mm)	270
Swivel Radius (mm)	130
To Suit Fixing Bolt (mm)	16
Wheel Material	Nylon
Colour / Shore Hardness	White Nylon
Temperature Resistance	&quot;-30 °C TO +80 °C
Tread (mm)	2 x 55
Load Capacity (kg)	4500