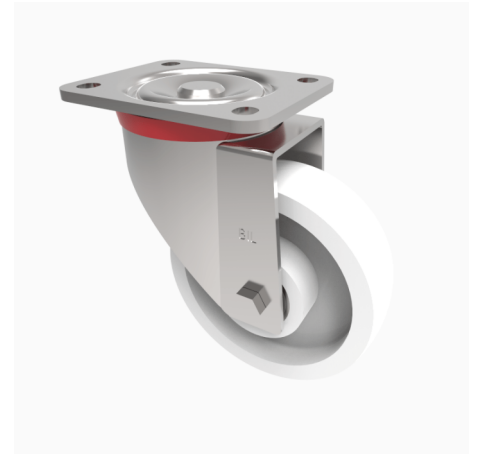


## Nylon Plate Swivel Castor 150mm 800kg Load

**Product code: BZP150NYBJ**

Pressed steel swivel castor with a flat plate fixing fitted with a white nylon wheel with ball bearings. Wheel diameter 150mm, tread width 45mm, overall height 194mm, plate size 135mm x 110mm, hole centres 105mm x 80mm, Load capacity 800kg.



Diameter (mm)	150
Castor Type	Swivel
Fixing Option	Plate
Height (mm)	194
Wheel Material	Nylon
Colour / Shore Hardness	White Nylon
Temperature Resistance	-30 °C TO +80 °C
Bearing Type	Ball
Load Capacity (kg)	800
Tread (mm)	45
Swivel Radius (mm)	130
Plate Size (mm)	135 x 110
Hole Centres (mm)	105 x 80
Top Plate Thickness (mm)	6
Fork Thickness (mm)	4
To Suit Fixing Bolt (mm)	12

## BIL GROUP LTD

Porte Marsh Road, Calne, Wiltshire, SN11 9BW

Registered in England No: 2603821

VAT Reg: GB572705729

