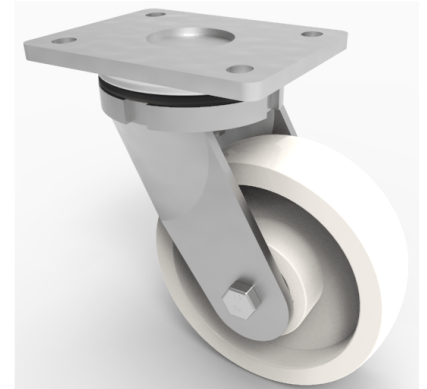


## Nylon Plate Swivel Castor 150mm 800kg Load

**Product code: BZSAB150LNYB**

Fabricated zinc plated swivel castor with plate fixing fitted with a white nylon wheel with roller bearings. Wheel diameter 150mm, tread width 45mm, overall height 200mm, plate size 138mm x 110mm, hole centres 105mm x 80mm/75mm. Load capacity 800kg.



Diameter (mm)	150
Fixing Option	Plate
Castor Type	Swivel
Bearing Type	Roller
Height (mm)	200
Plate Size (mm)	138 x 110
Hole Centres (mm)	105 x 80
To Suit Fixing Bolt (mm)	10
Wheel Material	Nylon
Colour / Shore Hardness	White Nylon
Temperature Resistance	-30 °C TO +80 °C
Top Plate Thickness (mm)	8
Fork Thickness (mm)	6
Swivel Radius (mm)	130
Load Capacity (kg)	800
Tread (mm)	45