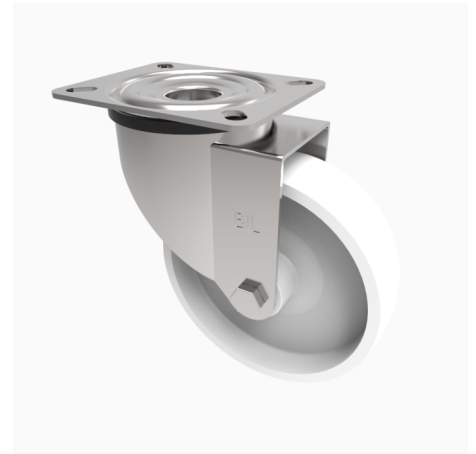


Nylon Plate Swivel Castor 160mm 350kg Load

Product code: SSMM160NYB

Grade 304 Pressed stainless steel swivel castor with a top plate fixing fitted with a white nylon wheel with a roller bearing. Wheel diameter 160mm, tread width 45mm, overall height 195mm, top plate 140mm x 10mm, hole centres 105mm x 80/75mm. Load capacity 350kg.



Diameter (mm)	160
Fixing Option	Plate
Castor Type	Swivel
Height (mm)	195
Wheel Material	Nylon
Colour / Shore Hardness	White Nylon
Bearing Type	Roller
Tread (mm)	45
Fork Thickness (mm)	2
To Suit Fixing Bolt (mm)	10
Load Capacity (kg)	350
Temperature Resistance	-30 °C TO +80 °C
Plate Size (mm)	135 x 110
Hole Centres (mm)	105 x 80
Top Plate Thickness (mm)	3
Swivel Radius (mm)	133

BIL GROUP LTD

Porte Marsh Road, Calne, Wiltshire, SN11 9BW

Registered in England No: 2603821

VAT Reg: GB572705729

