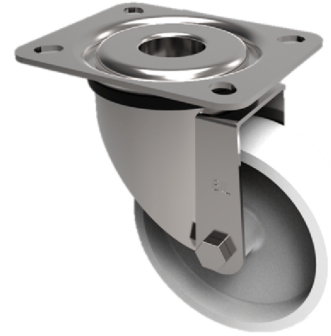


## Nylon Plate Swivel Castor 160mm 350kg Load

**Product code: BZWB160NYB**



Pressed steel swivel castor with a top plate fixing fitted with a white nylon wheel with a roller bearing. Wheel diameter 160mm, tread width 40mm, overall height 195mm, top plate 135mm x 110mm, hole centres 105mm x 80/75mm. Load capacity 350kg.

|                          |                  |
|--------------------------|------------------|
| Diameter (mm)            | 160              |
| Castor Type              | Swivel           |
| Fixing Option            | Plate            |
| Height (mm)              | 190              |
| Wheel Material           | Nylon            |
| Colour / Shore Hardness  | White Nylon      |
| Temperature Resistance   | -30 °C TO +80 °C |
| Bearing Type             | Roller           |
| Load Capacity (kg)       | 350              |
| Tread (mm)               | 40               |
| Swivel Radius (mm)       | 132              |
| Plate Size (mm)          | 135 x 110        |
| Hole Centres (mm)        | 105 x 80         |
| Top Plate Thickness (mm) | 4                |
| Fork Thickness (mm)      | 3                |
| To Suit Fixing Bolt (mm) | 10               |

### BIL GROUP LTD

Porte Marsh Road, Calne, Wiltshire, SN11 9BW

Registered in England No: 2603821

VAT Reg: GB572705729

