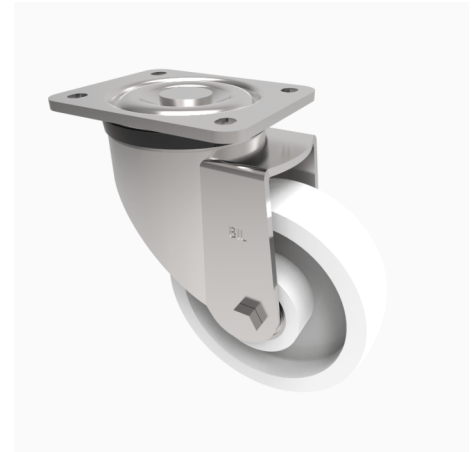


Nylon Plate Swivel Castor 160mm 600kg Load

Product code: BZXP160NYBJ

Pressed steel swivel castor with a top plate fixing fitted with a white nylon wheel with ball bearings. Wheel diameter 160mm, tread width 50mm, overall height 205mm, top plate 135mm x 110mm, hole centres 105mm x 80/75mm. Load capacity 600kg.



| | |
|--------------------------|------------------|
| Diameter (mm) | 160 |
| Castor Type | Swivel |
| Fixing Option | Plate |
| Height (mm) | 205 |
| Wheel Material | Nylon |
| Colour / Shore Hardness | White Nylon |
| Temperature Resistance | -30 °C TO +80 °C |
| Bearing Type | Ball |
| Load Capacity (kg) | 600 |
| Tread (mm) | 50 |
| Swivel Radius (mm) | 145 |
| Plate Size (mm) | 135 x 110 |
| Hole Centres (mm) | 105 x 80/75 |
| Top Plate Thickness (mm) | 6 |
| Fork Thickness (mm) | 5 |
| To Suit Fixing Bolt (mm) | 10 |