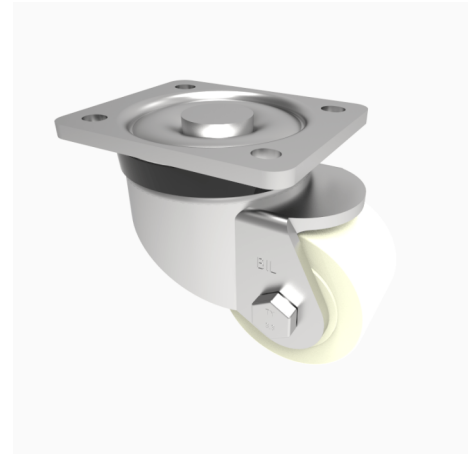


Nylon Plate Swivel Castor 200mm 1000kg Load

Product code: BZXP200NYBJHD

Pressed steel swivel castor with a top plate fixing fitted with a cast nylon wheel with ball bearings. Wheel diameter 200mm, tread width 50mm, overall height 245mm, top plate 135mm x 110mm, hole centres 105mm x 80/75mm. Load capacity 1000kg.



Diameter (mm)	200
Castor Type	Swivel
Fixing Option	Plate
Height (mm)	245
Wheel Material	Nylon
Colour / Shore Hardness	White Nylon
Temperature Resistance	-30 °C TO +80 °C
Bearing Type	Ball
Load Capacity (kg)	1000
Tread (mm)	50
Swivel Radius (mm)	165
Plate Size (mm)	135 x 110
Hole Centres (mm)	105 x 80/75
Top Plate Thickness (mm)	6
Fork Thickness (mm)	5
To Suit Fixing Bolt (mm)	10

BIL GROUP LTD

Porte Marsh Road, Calne, Wiltshire, SN11 9BW

Registered in England No: 2603821

VAT Reg: GB572705729

