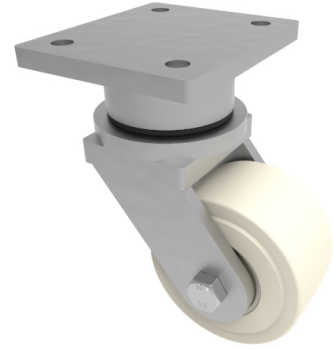


## Nylon Plate Swivel Castor 200mm 3000kg Load

**Product code: BZUL200NYBJ**



Fabricated swivel castor with a flat plate fixing fitted with a machined nylon wheel with ball bearings. Wheel diameter 200mm, tread width 55mm, overall height 305mm, plate size 178mm x 153mm, hole centres 127mm x 102mm. Load capacity 3000kg. **\*\*MANUFACTURED TO ORDER\*\***

Diameter (mm)	200
Fixing Option	Plate
Castor Type	Swivel
Bearing Type	Ball
Height (mm)	305
Plate Size (mm)	178 X 153
Hole Centres (mm)	127 x 102
To Suit Fixing Bolt (mm)	16
Wheel Material	Cast Nylon
Colour / Shore Hardness	White Cast Nylon / 60 - 90 Shore D
Temperature Resistance	-30 °C TO +80 °C
Swivel Radius (mm)	172
Load Capacity (kg)	3000
Tread (mm)	55

### BIL GROUP LTD

Porte Marsh Road, Calne, Wiltshire, SN11 9BW

Registered in England No: 2603821

VAT Reg: GB572705729

