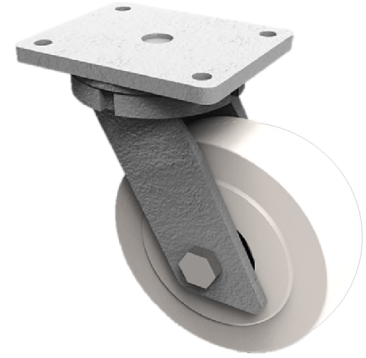


## Nylon Plate Swivel Castor 200mm 3000kg Load

**Product code: BZQ200NYBJ**



Fabricated swivel castor with a top plate fixing fitted with a heavy duty white nylon wheel with ball bearings. Wheel diameter 200mm, tread width 55mm, overall height 264mm, top plate 175mm x 140mm, hole centres 140mm x 105mm. Load capacity 3000kg.

Diameter (mm)	200
Fixing Option	Plate
Castor Type	Swivel
Bearing Type	Ball
Height (mm)	264
Plate Size (mm)	170 X 140
Hole Centres (mm)	140 X 105
To Suit Fixing Bolt (mm)	14
Wheel Material	Cast Nylon
Colour / Shore Hardness	White Cast Nylon / 60 - 90 Shore D
Temperature Resistance	-30 °C TO +80 °C
Top Plate Thickness (mm)	12
Fork Thickness (mm)	10
Swivel Radius (mm)	167
Load Capacity (kg)	3000
Tread (mm)	55