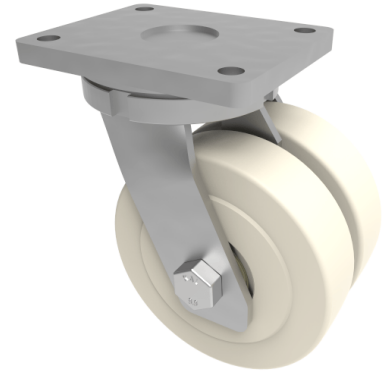


Nylon Plate Swivel Castor 200mm 5000kg Load

Product code: 2BZQX200NYBJ

Twin wheeled swivel castor with a top plate fixing fitted with 2 white nylon wheels with ball bearings. Wheel diameter 2 x 200mm, tread width 2 x 55mm, overall height 264mm, top plate 200mm x 160mm, hole centres 160mm x 120. Load capacity 5000kg.



Diameter (mm)	200
Fixing Option	Plate
Castor Type	Swivel
Bearing Type	Ball
Plate Size (mm)	200 X 160
Hole Centres (mm)	160 X 120
Height (mm)	264
Swivel Radius (mm)	175
To Suit Fixing Bolt (mm)	16
Wheel Material	Nylon
Colour / Shore Hardness	White Nylon
Temperature Resistance	"-30 °C TO +80 °C
Tread (mm)	2 x 55
Load Capacity (kg)	5000
Top Plate Thickness (mm)	16
Fork Thickness (mm)	12