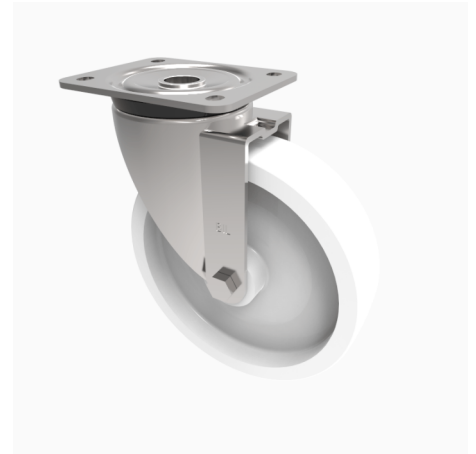


Nylon Plate Swivel Castor 200mm 500kg Load

Product code: BZPH200NY

Pressed steel swivel castor with a top plate fixing fitted with a white nylon wheel with plain bores. Wheel diameter 200mm, tread width 50mm, overall height 238mm, top plate 135mm x 110mm, hole centres 105mm x 80/75mm. Load capacity 500kg.



Diameter (mm)	200
Castor Type	Swivel
Fixing Option	Plate
Height (mm)	238
Wheel Material	Nylon
Colour / Shore Hardness	White Nylon
Temperature Resistance	-30 °C TO +80 °C
Bearing Type	Plain
Load Capacity (kg)	500
Tread (mm)	50
Swivel Radius (mm)	153
Plate Size (mm)	135 x 110
Hole Centres (mm)	105 x 80/75
Top Plate Thickness (mm)	5
Fork Thickness (mm)	5
To Suit Fixing Bolt (mm)	10