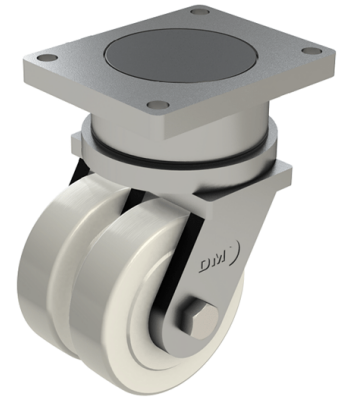


Nylon Plate Swivel Castor 200mm 6000kg Load

Product code: T200NYBJ

POA Heavy duty fabricated twin wheel swivel castor fitted with 2 x cast machined nylon wheels with ball bearings, Wheel diameter 200mm, Tread width 55mm x 2, Overall height 335mm, Top plate 250mm x 200mm, Hole centres 210mm x 160mm, Load capacity 6000kg ****MANUFACTURED TO ORDER****



Diameter (mm)	200
Fixing Option	Plate
Castor Type	Swivel
Bearing Type	Ball
Plate Size (mm)	250 x 200
Hole Centres (mm)	250 x 200
Height (mm)	335
Swivel Radius (mm)	165
To Suit Fixing Bolt (mm)	20
Wheel Material	Nylon
Colour / Shore Hardness	White Nylon
Temperature Resistance	"-30 °C TO +80 °C
Tread (mm)	2 x 55
Load Capacity (kg)	6000