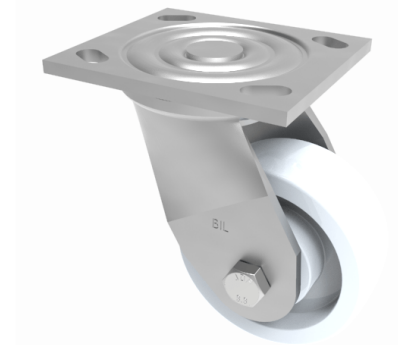


## Nylon Plate Swivel Castor 200mm 600kg Load

**Product code: BZJ200NY/USA**

Fabricated swivel castor with a top plate fixing fitted with a white nylon wheel with a plain bearing. Wheel diameter 200mm, tread width 50mm, overall height 240mm, top plate 115mm x 102mm, hole centres 92mm x 67mm and 76mm x 76mm. Load capacity 600kg.



Diameter (mm)	200
Fixing Option	Plate
Castor Type	Swivel
Bearing Type	Plain
Height (mm)	240
Plate Size (mm)	115 x 102
Hole Centres (mm)	76/92 x 76/67
To Suit Fixing Bolt (mm)	10
Wheel Material	Nylon
Colour / Shore Hardness	White Nylon
Temperature Resistance	-30 °C TO +80 °C
Top Plate Thickness (mm)	5.5
Fork Thickness (mm)	5.5
Swivel Radius (mm)	154
Load Capacity (kg)	600
Tread (mm)	50

### BIL GROUP LTD

Porte Marsh Road, Calne, Wiltshire, SN11 9BW

Registered in England No: 2603821

VAT Reg: GB572705729

