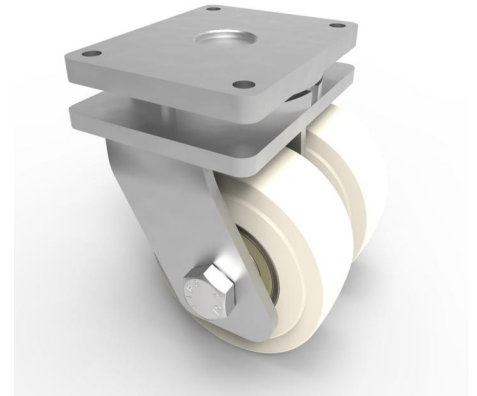


## Nylon Plate Swivel Castor 200mm 7500kg Load

**Product code: 2BZXHX200NYBJ**

Fabricated swivel castor fitted with a top plate, 2 x 200mm diameter heavy duty nylon wheels with ball bearings, 80mm x 2 Tread width, 280mm overall height, 255 x 200mm top plate, 210 x 160mm bolt holes, with a load capacity of 7500kgs.



Diameter (mm)	200
Fixing Option	Plate
Castor Type	Swivel
Bearing Type	Ball
Plate Size (mm)	255 X 200
Hole Centres (mm)	210 X 160
Height (mm)	280
Swivel Radius (mm)	200
To Suit Fixing Bolt (mm)	16
Wheel Material	Nylon
Colour / Shore Hardness	White Nylon
Temperature Resistance	&quot;-30 °C TO +80 °C
Tread (mm)	2 x 80
Load Capacity (kg)	7500
Top Plate Thickness (mm)	21
Fork Thickness (mm)	12

### BIL GROUP LTD

Porte Marsh Road, Calne, Wiltshire, SN11 9BW

Registered in England No: 2603821

VAT Reg: GB572705729

