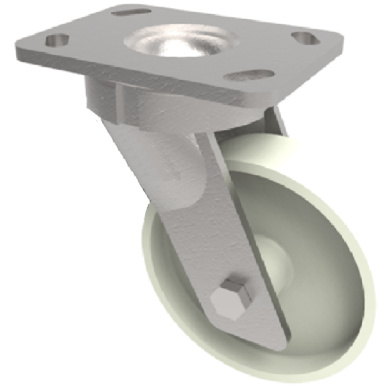


Nylon Plate Swivel Castor 200mm 900kg Load

Product code: BZKL200NYBJHD

Fabricated fixed castor with a top plate fixing fitted with a white nylon wheel with ball bearings. Wheel diameter 200mm, tread width 50mm, overall height 245mm, top plate 138mm x 110mm, hole centres 105mm x 80/75mm. Load capacity 900kg.



| | |
|--------------------------|------------------------------------|
| Diameter (mm) | 200 |
| Fixing Option | Plate |
| Castor Type | Swivel |
| Bearing Type | Ball |
| Height (mm) | 245 |
| Plate Size (mm) | 138 x 110 |
| Hole Centres (mm) | 105 x 80 |
| To Suit Fixing Bolt (mm) | 10 |
| Wheel Material | Cast Nylon |
| Colour / Shore Hardness | White Cast Nylon / 60 - 90 Shore D |
| Temperature Resistance | -30 °C TO +80 °C |
| Top Plate Thickness (mm) | 7.5 |
| Fork Thickness (mm) | 6 |
| Swivel Radius (mm) | 152 |
| Load Capacity (kg) | 900 |
| Tread (mm) | 50 |