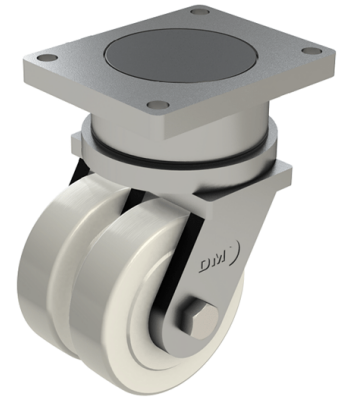


Nylon Plate Swivel Castor 250mm 10000kg Load

Product code: T250NYBJHD

POA Heavy duty fabricated twin wheel swivel castor fitted with 2 x cast machined nylon wheels with ball bearings, Wheel diameter 250mm, Tread width 80mm x 2, Overall height 480mm, Top plate 300mm x 400mm, Hole centres 240mm x 340mm, Load capacity 10000kg ****MANUFACTURED TO ORDER****



Diameter (mm)	250
Fixing Option	Plate
Castor Type	Swivel
Bearing Type	Ball
Plate Size (mm)	300 x 400
Hole Centres (mm)	300 x 400
Height (mm)	480
Swivel Radius (mm)	215
To Suit Fixing Bolt (mm)	28
Wheel Material	Nylon
Colour / Shore Hardness	White Nylon
Temperature Resistance	"-30 °C TO +80 °C
Tread (mm)	2 x 80
Load Capacity (kg)	10000