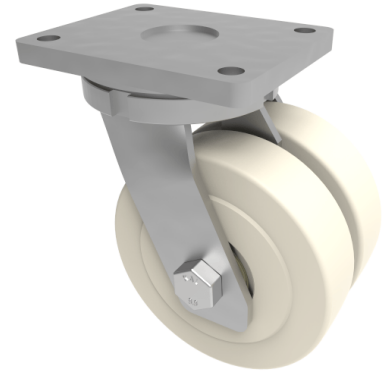


## Nylon Plate Swivel Castor 250mm 5000kg Load

**Product code: 2BZQX250NYBJ**

Twin wheeled swivel castor with a top plate fixing fitted with 2 white nylon wheels with ball bearings. Wheel diameter 2 x 250mm, tread width 2 x 55mm, overall height 314mm, top plate 200mm x 160mm, hole centres 160mm x 120. Load capacity 5000kg.



Diameter (mm)	250
Fixing Option	Plate
Castor Type	Swivel
Bearing Type	Ball
Plate Size (mm)	200 X 160
Hole Centres (mm)	160 X 120
Height (mm)	314
Swivel Radius (mm)	218
To Suit Fixing Bolt (mm)	16
Wheel Material	Nylon
Colour / Shore Hardness	White Nylon
Temperature Resistance	&quot;-30 °C TO +80 °C
Tread (mm)	2 x 55
Load Capacity (kg)	5000
Top Plate Thickness (mm)	16
Fork Thickness (mm)	12

### BIL GROUP LTD

Porte Marsh Road, Calne, Wiltshire, SN11 9BW

Registered in England No: 2603821

VAT Reg: GB572705729

