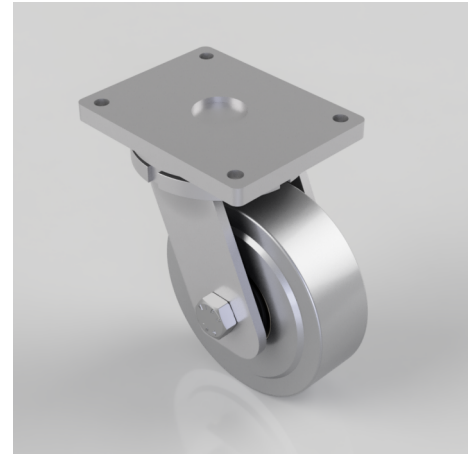


Nylon Plate Swivel Castor 250mm 7500kg Load

Product code: BZQXX250MSTBJ

Fabricated swivel castor with a top plate fixing fitted with a machined steel wheel with ball bearings. Wheel diameter 250mm, tread width 80mm, overall height 330mm, top plate 255mm x 200mm, hole centres 200mm x 160mm. Load capacity 7500kg.



Diameter (mm)	250
Fixing Option	Plate
Castor Type	Swivel
Bearing Type	Ball
Height (mm)	330
Plate Size (mm)	255 X 200
Hole Centres (mm)	210 X 160
To Suit Fixing Bolt (mm)	16
Wheel Material	Steel
Colour / Shore Hardness	Steel
Temperature Resistance	-30 °C TO +80 °C
Top Plate Thickness (mm)	21
Fork Thickness (mm)	12
Swivel Radius (mm)	195
Load Capacity (kg)	7500
Tread (mm)	80

BIL GROUP LTD

Porte Marsh Road, Calne, Wiltshire, SN11 9BW

Registered in England No: 2603821

VAT Reg: GB572705729

