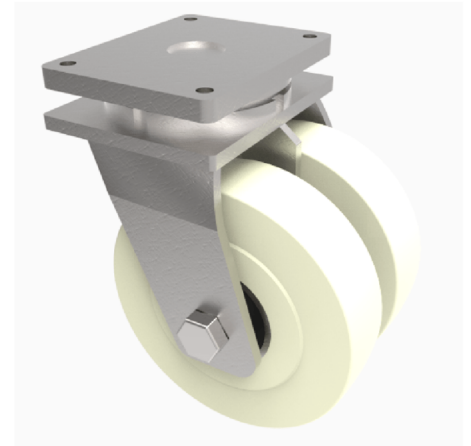


Nylon Plate Swivel Castor 250mm 7500kg Load

Product code: 2BZXHX250NYBJ

Fabricated twin wheel swivel castor with a top plate fixing fitted with heavy duty a white nylon wheels with ball bearings. Wheel diameter 250mm, tread width 2 x 100mm, overall height 330mm, plate size 255 x 200mm, hole centres 210mm x 160mm. Load capacity 7500kg.



Diameter (mm)	250
Fixing Option	Plate
Castor Type	Swivel
Bearing Type	Ball
Plate Size (mm)	255 X 200
Hole Centres (mm)	210 X 160
Height (mm)	330
Swivel Radius (mm)	225
To Suit Fixing Bolt (mm)	16
Wheel Material	Nylon
Colour / Shore Hardness	White Nylon
Temperature Resistance	"-30 °C TO +80 °C
Tread (mm)	2 x 80
Load Capacity (kg)	7500
Top Plate Thickness (mm)	21
Fork Thickness (mm)	12

BIL GROUP LTD

Porte Marsh Road, Calne, Wiltshire, SN11 9BW

Registered in England No: 2603821

VAT Reg: GB572705729

