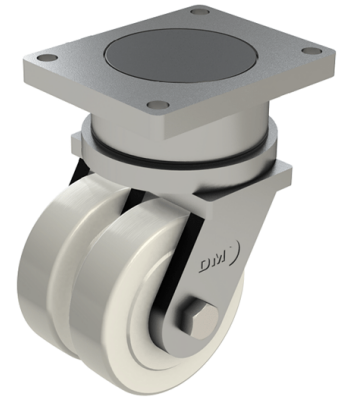


## Nylon Plate Swivel Castor 250mm 8000kg Load

**Product code: T250NYBJ**

**POA** Heavy duty fabricated twin wheel swivel castor fitted with 2 x cast machined nylon wheels with ball bearings, Wheel diameter 250mm, Tread width 65mm x 2, Overall height 448mm, Top plate 300mm x 400mm, Hole centres 240mm x 340mm, Load capacity 8000kg **\*\*MANUFACTURED TO ORDER\*\***



Diameter (mm)	250
Fixing Option	Plate
Castor Type	Swivel
Bearing Type	Ball
Plate Size (mm)	300 x 400
Hole Centres (mm)	300 x 400
Height (mm)	448
Swivel Radius (mm)	190
To Suit Fixing Bolt (mm)	28
Wheel Material	Nylon
Colour / Shore Hardness	White Nylon
Temperature Resistance	&quot;-30 °C TO +80 °C
Tread (mm)	2 x 65
Load Capacity (kg)	8000