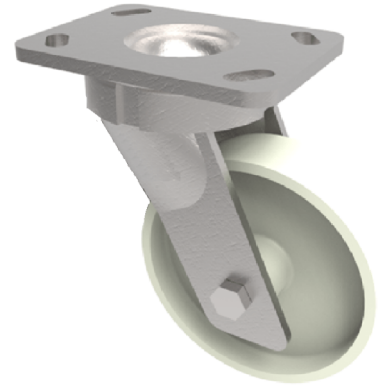


Nylon Plate Swivel Castor 250mm 930kg Load

Product code: BZK250NY



Fabricated swivel castor with a top plate fixing fitted with a white nylon wheel with a plain bearing. Wheel diameter 250mm, tread width 50mm, overall height 300mm, top plate 150mm x 110mm, hole centres 105mm x 80mm or 121mm x 59mm. Load capacity 930kg.

Diameter (mm)	250
Fixing Option	Plate
Castor Type	Swivel
Bearing Type	Plain
Height (mm)	300
Plate Size (mm)	150 x 110
Hole Centres (mm)	105/121 x 80/59
To Suit Fixing Bolt (mm)	12
Wheel Material	Nylon
Colour / Shore Hardness	White Nylon
Temperature Resistance	-30 °C TO +80 °C
Top Plate Thickness (mm)	7.5
Fork Thickness (mm)	6
Swivel Radius (mm)	197
Load Capacity (kg)	930
Tread (mm)	50