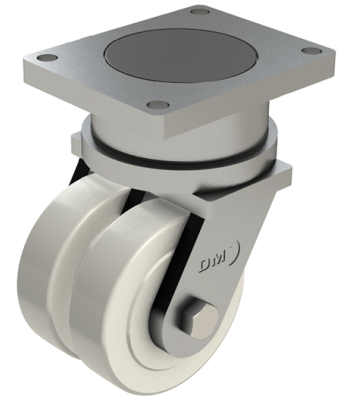


Nylon Plate Swivel Castor 300mm 10000kg Load

Product code: T300NYBJ

POA Heavy duty fabricated twin wheel swivel castor fitted with 2 x cast machined nylon wheels with ball bearings, Wheel diameter 300mm, Tread width 80mm x 2, Overall height 530mm, Top plate 300mm x 400mm, Hole centres 240mm x 340mm, Load capacity 10000kg ****MANUFACTURED TO ORDER****



| | |
|--------------------------|------------------------|
| Diameter (mm) | 300 |
| Fixing Option | Plate |
| Castor Type | Swivel |
| Bearing Type | Ball |
| Plate Size (mm) | 300 x 400 |
| Hole Centres (mm) | 300 x 400 |
| Height (mm) | 530 |
| Swivel Radius (mm) | 240 |
| To Suit Fixing Bolt (mm) | 20 |
| Wheel Material | Nylon |
| Colour / Shore Hardness | White Nylon |
| Temperature Resistance | "-30 °C TO +80 °C |
| Tread (mm) | 2 x 80 |
| Load Capacity (kg) | 10000 |