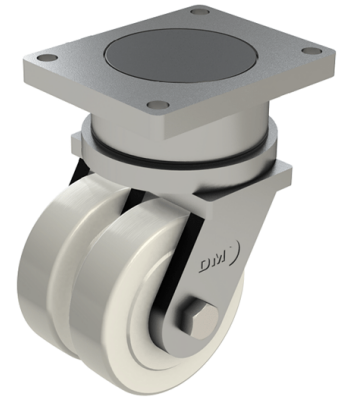


Nylon Plate Swivel Castor 300mm 15000kg Load

Product code: T300NYBJHD

POA Heavy duty fabricated twin wheel swivel castor fitted with 2 x cast machined nylon wheels with ball bearings, Wheel diameter 300mm, Tread width 110mm x 2, Overall height 589mm, Top plate 300mm x 400mm, Hole centres 240mm x 340mm, Load capacity 15000kg ****MANUFACTURED TO ORDER****



Diameter (mm)	300
Fixing Option	Plate
Castor Type	Swivel
Bearing Type	Ball
Plate Size (mm)	300 x 400
Hole Centres (mm)	300 x 400
Height (mm)	589
Swivel Radius (mm)	260
To Suit Fixing Bolt (mm)	20
Wheel Material	Nylon
Colour / Shore Hardness	White Nylon
Temperature Resistance	"-30 °C TO +80 °C
Tread (mm)	2 x 110
Load Capacity (kg)	15000

BIL GROUP LTD

Porte Marsh Road, Calne, Wiltshire, SN11 9BW

Registered in England No: 2603821

VAT Reg: GB572705729

