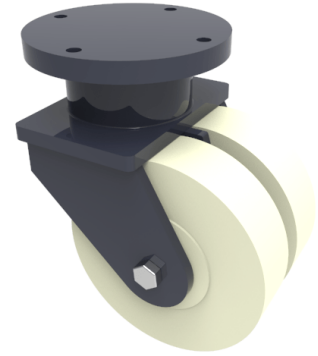


## Nylon Plate Swivel Castor 400mm 11500kg Load

**Product code: 2BZSZ400NYBJ**



**POA** Heavy duty fabricated twin wheel swivel castor fitted with 2 x cast machined nylon wheels with ball bearings, Wheel diameter 400mm, Tread width 110mm x 2, Overall height 570mm, Top plate 365mm diameter, Hole centres 4 holes at 300mm pcd, Load capacity 12000kg **\*\*MANUFACTURED TO ORDER\*\***

Diameter (mm)	400
Fixing Option	Plate
Castor Type	Swivel
Bearing Type	Ball
Plate Size (mm)	365
Hole Centres (mm)	365
Height (mm)	570
Swivel Radius (mm)	369
To Suit Fixing Bolt (mm)	24
Wheel Material	Nylon
Colour / Shore Hardness	White Nylon
Temperature Resistance	&quot;-30 °C TO +80 °C
Tread (mm)	2 x 110
Load Capacity (kg)	11500

### BIL GROUP LTD

Porte Marsh Road, Calne, Wiltshire, SN11 9BW

Registered in England No: 2603821

VAT Reg: GB572705729

