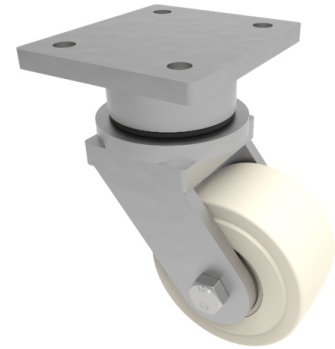


Nylon Plate Swivel Castor 400mm 6000kg Load

Product code: BZU400NYBJ



POA Fabricated swivel castor with a flat plate fixing fitted with a nylon wheel with ball bearings. Wheel diameter 400mm, tread width 110mm, overall height 552mm, plate size 178mm x 153mm, hole centres 127mm x 102mm. Load capacity 6000kg. ****MANUFACTURED TO ORDER****

| | |
|--------------------------|------------------------------------|
| Diameter (mm) | 400 |
| Fixing Option | Plate |
| Castor Type | Swivel |
| Bearing Type | Ball |
| Height (mm) | 552 |
| Plate Size (mm) | 178 X 153 |
| Hole Centres (mm) | 127 x 102 |
| To Suit Fixing Bolt (mm) | 16 |
| Wheel Material | Cast Nylon |
| Colour / Shore Hardness | White Cast Nylon / 60 - 90 Shore D |
| Temperature Resistance | -30 °C TO +80 °C |
| Swivel Radius (mm) | 286 |
| Load Capacity (kg) | 6000 |
| Tread (mm) | 110 |