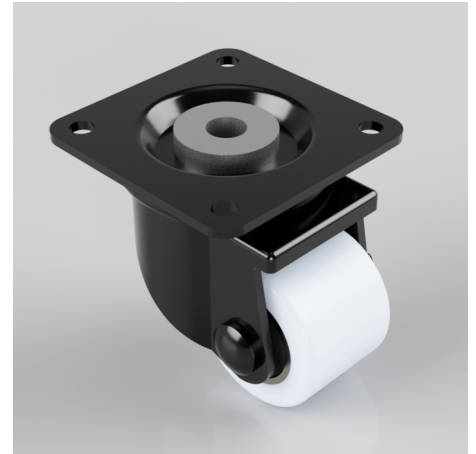


Nylon Plate Swivel Castor 40mm 150kg Load

Product code: BZXH40NYBJ

Pressed steel swivel castor with a top plate with a 10.2mm hole in the king pin fitted with a white nylon wheel with ball bearing. Wheel diameter 40mm, tread width 30mm, overall height 64mm, top plate 65mm x 65mm, hole centres 50mm x 50mm. Load capacity 150kg.



Fixing Option	Plate
Castor Type	Swivel
Load Capacity (kg)	150
Wheel Material	Nylon
Diameter (mm)	40
Bearing Type	Ball
Tread (mm)	30
Height (mm)	64
Swivel Radius (mm)	44
Colour / Shore Hardness	White Nylon
Plate Size (mm)	65 x 65
Hole Centres (mm)	50 x 50
Top Plate Thickness (mm)	2.5
Fork Thickness (mm)	2.5
Fixing Bolt (mm)	6
Temperature Resistance	-30 °C TO +80 °C