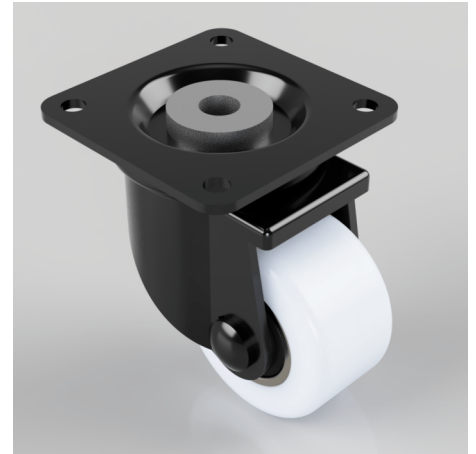


Nylon Plate Swivel Castor 50mm 200kg Load

Product code: BZXH50NYBJ

Pressed steel swivel castor with top plate fixing, Fitted with a white nylon wheel with ball bearing. Wheel diameter 50mm, tread width 28mm, overall height 75mm, top plate 65mm x 65mm, hole centres 50mm x 50mm. Load capacity 200kg.



Fixing Option	Plate
Castor Type	Swivel
Load Capacity (kg)	200
Wheel Material	Nylon
Diameter (mm)	50
Bearing Type	Ball
Tread (mm)	28
Height (mm)	75
Swivel Radius (mm)	50
Colour / Shore Hardness	White Nylon
Plate Size (mm)	65 x 65
Hole Centres (mm)	50 x 50
Top Plate Thickness (mm)	2.5
Fork Thickness (mm)	2.5
Fixing Bolt (mm)	6
Temperature Resistance	-30 °C TO +80 °C