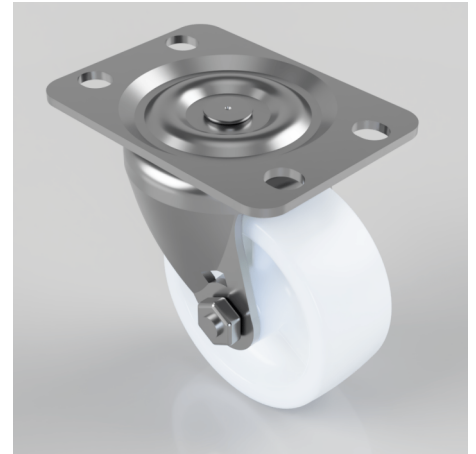


Nylon Plate Swivel Castor 50mm 50kg Load

Product code: BZH50NY

Pressed steel swivel castor with a top plate fixing fitted with a white nylon wheel with a plain bore. Wheel diameter 50mm, tread width 20mm, overall height 64mm, top plate 67mm x 48mm, hole centres 56/54mm x 25mm. Load capacity 50kg



Diameter (mm)	50
Castor Type	Swivel
Fixing Option	Plate
Height (mm)	64
Wheel Material	Nylon
Colour / Shore Hardness	White Nylon
Temperature Resistance	-30 °C TO +80 °C
Bearing Type	Plain
Load Capacity (kg)	50
Tread (mm)	20
Swivel Radius (mm)	38
Plate Size (mm)	67 x 48
Hole Centres (mm)	54 x 25
Top Plate Thickness (mm)	2
Fork Thickness (mm)	2
To Suit Fixing Bolt (mm)	6