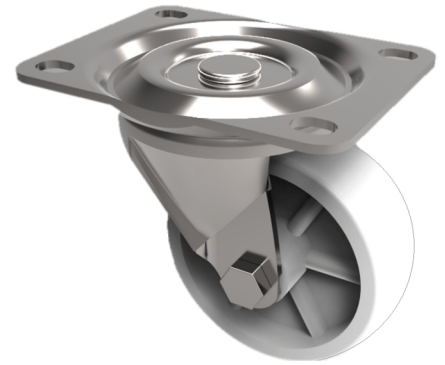


## Nylon Plate Swivel Castor 63mm 85kg Load

**Product code: BZLH63NY**

Pressed steel swivel castor with a top plate fixing fitted with a white nylon wheel with a plain bore. Wheel diameter 63mm, tread width 28mm, overall height 81mm, top plate 95mm x 70mm. hole centres 76mm x 44.5mm. Load capacity 85kg.



Diameter (mm)	63
Castor Type	Swivel
Fixing Option	Plate
Height (mm)	81
Wheel Material	Nylon
Colour / Shore Hardness	White Nylon
Temperature Resistance	-30 °C TO +80 °C
Bearing Type	Plain
Load Capacity (kg)	85
Tread (mm)	28
Swivel Radius (mm)	51
Plate Size (mm)	95 x 67
Hole Centres (mm)	76 x 44
Top Plate Thickness (mm)	2
Fork Thickness (mm)	2
To Suit Fixing Bolt (mm)	8

### BIL GROUP LTD

Porte Marsh Road, Calne, Wiltshire, SN11 9BW

Registered in England No: 2603821

VAT Reg: GB572705729

