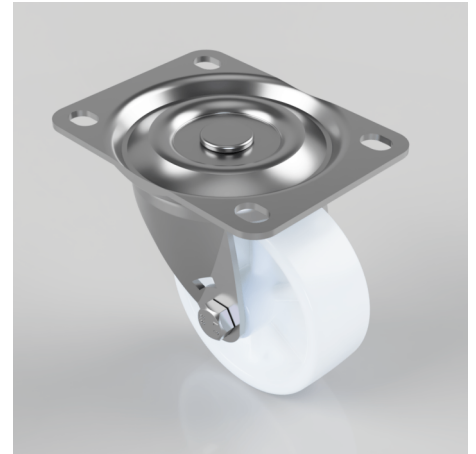


## Nylon Plate Swivel Castor 75mm 125kg Load

**Product code: BZH75NY**

Pressed steel swivel castor with a top plate fixing fitted with a white nylon wheel with a plain bore. Wheel diameter 75mm, tread width 28mm, overall height 95mm, top plate 105mm x 80mm, hole centres 80mm/87mm x 60mm. Load capacity 125kg.



Diameter (mm)	75
Castor Type	Swivel
Fixing Option	Plate
Height (mm)	95
Wheel Material	Nylon
Colour / Shore Hardness	White Nylon
Temperature Resistance	-30 °C TO +80 °C
Bearing Type	Plain
Load Capacity (kg)	125
Tread (mm)	28
Swivel Radius (mm)	59
Plate Size (mm)	105 X 80
Hole Centres (mm)	80 X 60
Top Plate Thickness (mm)	2.5
Fork Thickness (mm)	2.5
To Suit Fixing Bolt (mm)	8

### BIL GROUP LTD

Porte Marsh Road, Calne, Wiltshire, SN11 9BW

Registered in England No: 2603821

VAT Reg: GB572705729

