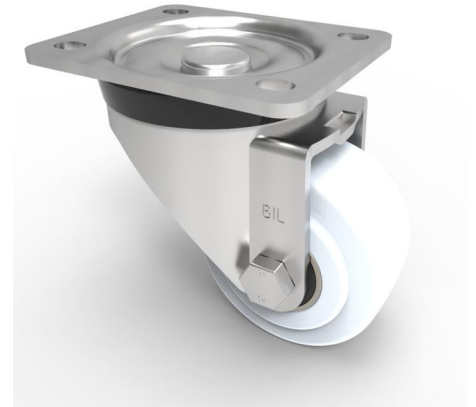


Nylon Plate Swivel Castor 75mm 400kg Load

Product code: BZHD75NYBJ

Pressed steel swivel (case hardened ball race) castor with a top plate fixing fitted with a white nylon wheel with ball bearings. Wheel diameter 75mm, tread width 37mm, overall height 108mm, top plate 105mm x 86mm, hole centres 80mm x 60mm. Load capacity 400kg.



Diameter (mm)	75
Castor Type	Swivel
Fixing Option	Plate
Height (mm)	108
Wheel Material	Nylon
Colour / Shore Hardness	White Nylon
Temperature Resistance	-30 °C TO +80 °C
Bearing Type	Ball
Load Capacity (kg)	400
Tread (mm)	37
Swivel Radius (mm)	76
Plate Size (mm)	105 x 86
Hole Centres (mm)	80 X 60
Top Plate Thickness (mm)	2.5
Fork Thickness (mm)	2.5
To Suit Fixing Bolt (mm)	8

BIL GROUP LTD

Porte Marsh Road, Calne, Wiltshire, SN11 9BW

Registered in England No: 2603821

VAT Reg: GB572705729

