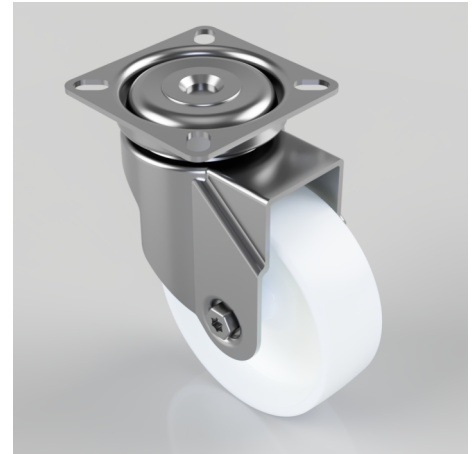


Nylon Plate Swivel Castor 75mm 60kg Load

Product code: BZRA75NY

Pressed steel swivel castor with a flat plate fitted with a white nylon wheel with a plain bore. Wheel diameter 75mm, tread width 24mm, overall height 101mm plate size 60mm x 60mm, hole centres 49mm x 49mm or 43mm x 43mm with a Load capacity 60kg.



Diameter (mm)	75
Fixing Option	Plate
Castor Type	Swivel
Plate Size (mm)	60 x 60
Hole Centres (mm)	49/43 x 49/43
Height (mm)	101
Bearing Type	Plain
Swivel Radius (mm)	65
Wheel Material	Nylon
Colour / Shore Hardness	White Nylon
Top Plate Thickness (mm)	1.8
Fork Thickness (mm)	1.8
Temperature Resistance	-15 °C TO +80 °C
To Suit Fixing Bolt (mm)	6
Tread (mm)	24
Load Capacity (kg)	60