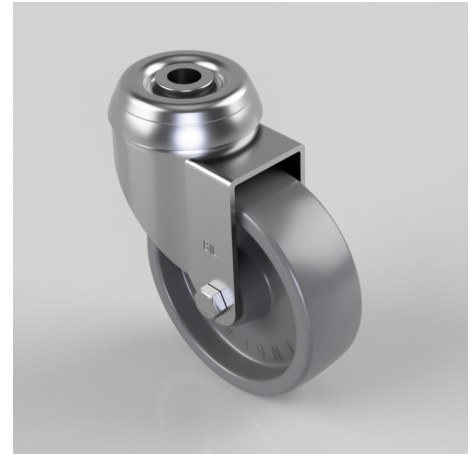


Nylon Plate Swivel Castor 75mm 70kg Load

Product code: BZD75GNYBH10

Pressed steel swivel castor with a 10mm bolt hole fixing fitted with a grey nylon wheel with a Plain Bore. Wheel diameter 75mm, tread width 25mm, overall height 99mm. Load capacity 70kg.



Diameter (mm)	75
Fixing Option	Bolt Hole
Castor Type	Swivel
Head Dia (mm)	48
Height (mm)	99
Bearing Type	Plain
Swivel Radius (mm)	66
Wheel Material	Nylon
Colour / Shore Hardness	Grey Nylon
Fork Thickness (mm)	2
Temperature Resistance	-15 °C TO +80 °C
To Suit Fixing Bolt (mm)	10
Tread (mm)	25
Load Capacity (kg)	70