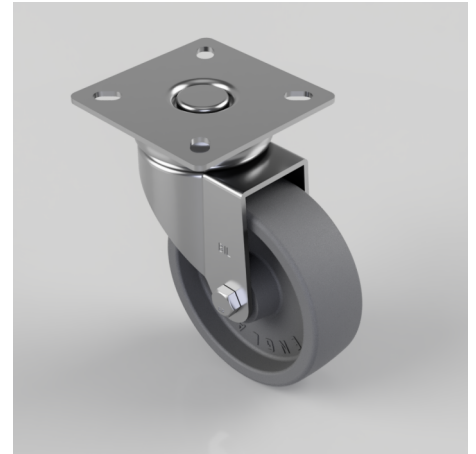


Nylon Plate Swivel Castor 75mm 70kg Load

Product code: BZD75GNY

Pressed steel swivel castor with a top plate fixing fitted with a grey nylon wheel with a Plain Bore. Wheel diameter 75mm, tread width 25mm, overall height 100mm, top plate 65mm x 65mm, hole centres 48/43mm x 48/43mm. Load capacity 70kg.



Diameter (mm)	75
Fixing Option	Plate
Castor Type	Swivel
Plate Size (mm)	65 x 65
Hole Centres (mm)	48/43 x 48/43
Height (mm)	100
Bearing Type	Plain
Swivel Radius (mm)	66
Wheel Material	Nylon
Colour / Shore Hardness	White Nylon
Top Plate Thickness (mm)	2
Fork Thickness (mm)	2
Temperature Resistance	-15 °C TO +80 °C
To Suit Fixing Bolt (mm)	6
Tread (mm)	25
Load Capacity (kg)	70

BIL GROUP LTD

Porte Marsh Road, Calne, Wiltshire, SN11 9BW

Registered in England No: 2603821

VAT Reg: GB572705729

