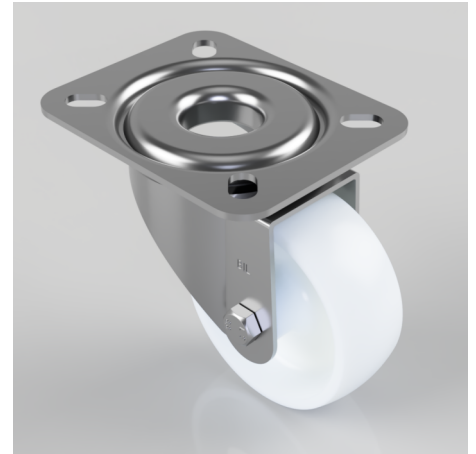


## Nylon Plate Swivel Castor 80mm 150kg Load

**Product code: BZRMM80NY**

Pressed steel swivel castor with top plate fixing fitted with a white nylon wheel with plain bore. Wheel diameter 80mm, tread width 30mm, overall height 100mm, top plate 104mm x 80mm, hole centres 80mm x 60mm or 72mm x 52mm. Load capacity 150kg.



Diameter (mm)	80
Castor Type	Swivel
Fixing Option	Plate
Height (mm)	100
Wheel Material	Nylon
Colour / Shore Hardness	White Nylon
Temperature Resistance	-30 °C TO +80 °C
Bearing Type	Plain
Load Capacity (kg)	150
Tread (mm)	30
Swivel Radius (mm)	74
Plate Size (mm)	105 X 85
Hole Centres (mm)	80/72 x 60/52
Top Plate Thickness (mm)	2.5
Fork Thickness (mm)	2
To Suit Fixing Bolt (mm)	8