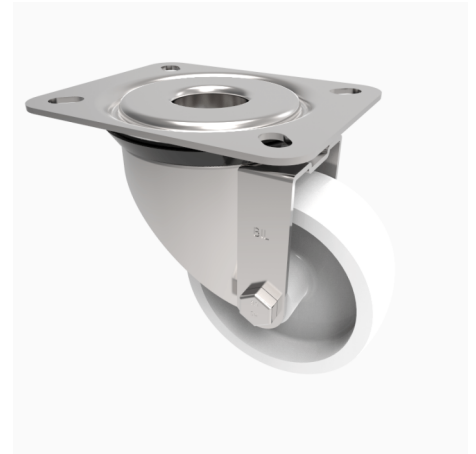


## Nylon Plate Swivel Castor 80mm 150kg Load

**Product code: BZRMM80NYBJ**

Pressed steel swivel castor with top plate fixing fitted with a white nylon wheel with ball bearing. Wheel diameter 80mm, tread width 32mm, overall height 100mm, top plate 104mm x 80mm, hole centres 80mm x 60mm or 72mm x 52mm. Load capacity 150kg.



Diameter (mm)	80
Castor Type	Swivel
Fixing Option	Plate
Height (mm)	100
Wheel Material	Nylon
Colour / Shore Hardness	White Nylon
Temperature Resistance	-30 °C TO +80 °C
Bearing Type	Ball
Load Capacity (kg)	150
Tread (mm)	32
Swivel Radius (mm)	74
Plate Size (mm)	122 x 77
Hole Centres (mm)	80/73 x 60/53
Top Plate Thickness (mm)	2.5
Fork Thickness (mm)	2.5
To Suit Fixing Bolt (mm)	8