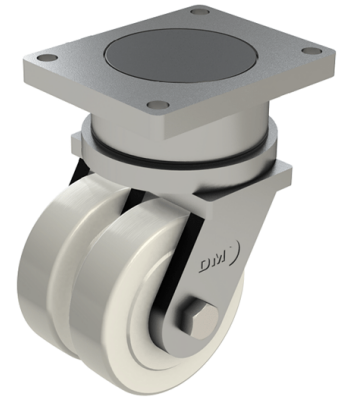


## Nylon Plate Swivel Castor 80mm 1800kg Load

**Product code: T80NYBJ**

**POA** Heavy duty fabricated twin wheel swivel castor fitted with 2 x cast machined nylon wheels with ball bearings, Wheel diameter 80mm, Tread width 40mm x 2, Overall height 135mm, Top plate 135mm x 110mm, Hole centres 105mm x 75mm, Load capacity 1800kg **\*\*MANUFACTURED TO ORDER\*\***



Diameter (mm)	80
Fixing Option	Plate
Castor Type	Swivel
Bearing Type	Ball
Plate Size (mm)	135 x 110
Hole Centres (mm)	135 x 110
Height (mm)	135
Swivel Radius (mm)	75
To Suit Fixing Bolt (mm)	14
Wheel Material	Nylon
Colour / Shore Hardness	White Nylon
Temperature Resistance	&quot;-30 °C TO +80 °C
Tread (mm)	2 x 40
Load Capacity (kg)	1800