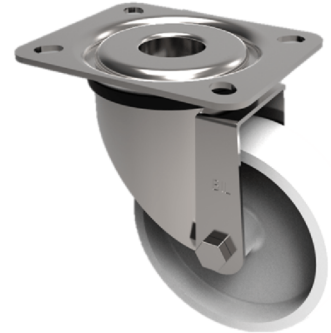


## Nylon Plate Swivel Castor 80mm 190kg Load

**Product code: SSXM80NYHT**



Grade 304 Stainless steel swivel castor with a top plate fixing fitted with a off white nylon wheel with a plain bore . Wheel diameter 80mm, tread width 35mm, overall height 110mm, top plate 100mm x 85mm, hole centres 80mm x 60mm or 75mm x 45mm. Load capacity 190kg at a maximum 150c.

Diameter (mm)	80
Fixing Option	Plate
Castor Type	Swivel
Height (mm)	110
Wheel Material	Nylon
Colour / Shore Hardness	White Nylon
Bearing Type	Plain
Tread (mm)	32
Fork Thickness (mm)	2.5
To Suit Fixing Bolt (mm)	8
Load Capacity (kg)	190
Temperature Resistance	-30 °C to +130 °C
Plate Size (mm)	100 x 85
Hole Centres (mm)	80/75 x 60/45
Swivel Radius (mm)	78