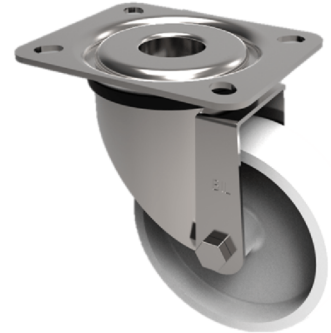


## Nylon Plate Swivel Castor 80mm 250kg Load

**Product code: SSEH80NYB**



Grade 304 Pressed stainless steel swivel castor with a top plate fixing fitted with a white nylon wheel with a roller bearing. Wheel diameter 80mm, tread width 35mm, overall height 111mm, plate size 105mm x 86mm, hole centres 80mm x 60mm. Load capacity 250kg.

Diameter (mm)	80
Fixing Option	Plate
Castor Type	Swivel
Height (mm)	110
Wheel Material	Nylon
Colour / Shore Hardness	White Nylon
Bearing Type	Roller
Tread (mm)	35
Fork Thickness (mm)	3
To Suit Fixing Bolt (mm)	8
Load Capacity (kg)	250
Temperature Resistance	-30 °C TO +80 °C
Plate Size (mm)	105 x 86
Hole Centres (mm)	80 X 60
Top Plate Thickness (mm)	3
Swivel Radius (mm)	80

### BIL GROUP LTD

Porte Marsh Road, Calne, Wiltshire, SN11 9BW

Registered in England No: 2603821

VAT Reg: GB572705729

