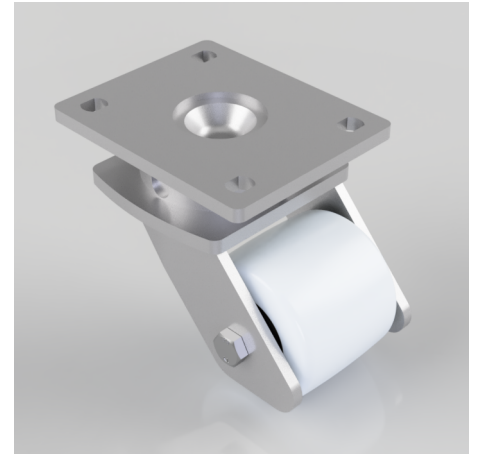


Nylon Plate Swivel Castor 82mm 600kg Load

Product code: BZKL82NYBJ

Fabricated swivel castor with a top plate fixing fitted with a white nylon pallet roller with ball bearings. Wheel diameter 82mm, tread width 70mm, overall height 131mm, top plate 138mm x 110mm, hole centres 105mm x 80mm. Load capacity 600kg.



Diameter (mm)	82
Fixing Option	Plate
Castor Type	Swivel
Bearing Type	Ball
Height (mm)	131
Plate Size (mm)	138 x 110
Hole Centres (mm)	105 x 80
To Suit Fixing Bolt (mm)	10
Wheel Material	Nylon
Colour / Shore Hardness	White Nylon
Temperature Resistance	-30 °C TO +80 °C
Top Plate Thickness (mm)	7.5
Fork Thickness (mm)	6
Swivel Radius (mm)	97
Load Capacity (kg)	600
Tread (mm)	70

BIL GROUP LTD

Porte Marsh Road, Calne, Wiltshire, SN11 9BW

Registered in England No: 2603821

VAT Reg: GB572705729

