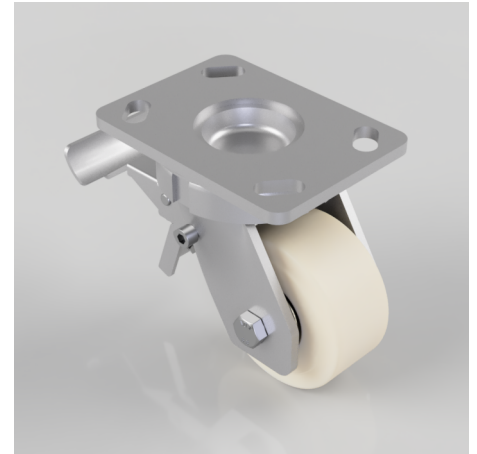


## Nylon Plate Swivel Castor Brake 100mm 1250kg Load

**Product code: BZK100NYBJSWB/45/HD**

Fabricated swivel castor with a top plate fixing fitted with a white nylon wheel with ball bearings and a total lock brake. Wheel diameter 100mm, tread width 45mm, overall height 150mm, top plate 150mm x 110mm, hole centres 105mm x 80mm or 121mm x 59mm. Load capacity 1250kg



Diameter (mm)	100
Fixing Option	Plate
Castor Type	Swivel with Total Lock Brake
Bearing Type	Ball
Height (mm)	150
Plate Size (mm)	150 x 110
Hole Centres (mm)	105/121 x 80/59
To Suit Fixing Bolt (mm)	12
Wheel Material	Cast Nylon
Colour / Shore Hardness	White Cast Nylon / 60 - 90 Shore D
Temperature Resistance	-30 °C TO +80 °C
Top Plate Thickness (mm)	7.5
Fork Thickness (mm)	6
Swivel Radius (mm)	130
Load Capacity (kg)	1250
Tread (mm)	45

### BIL GROUP LTD

Porte Marsh Road, Calne, Wiltshire, SN11 9BW

Registered in England No: 2603821

VAT Reg: GB572705729

