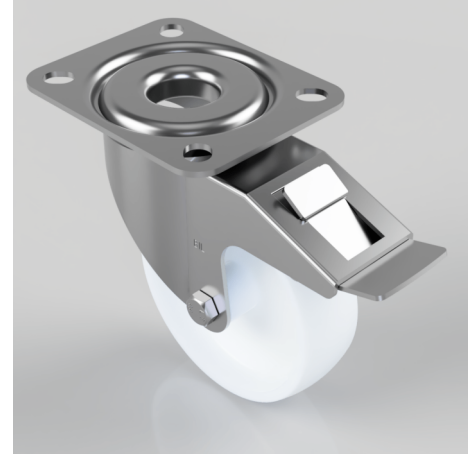


Nylon Plate Swivel Castor Brake 100mm 180kg Load

Product code: BZMM100NYSWB

Pressed steel swivel castor with a top plate fixing, fitted with a white nylon wheel with a plain bore and total lock brake. Wheel diameter: 100mm, Tread width: 30mm, Overall height: 128mm, Top plate: 105x85mm, Hole centres: 80x60mm, Load capacity: 180kg.



Diameter (mm)	100
Castor Type	Swivel with Total Lock Brake
Fixing Option	Plate
Height (mm)	128
Wheel Material	Nylon
Colour / Shore Hardness	White Nylon
Temperature Resistance	-30 °C TO +80 °C
Bearing Type	Plain
Load Capacity (kg)	180
Tread (mm)	30
Swivel Radius (mm)	118
Plate Size (mm)	105 X 85
Hole Centres (mm)	80 X 60
Top Plate Thickness (mm)	2.5
Fork Thickness (mm)	2
To Suit Fixing Bolt (mm)	8

BIL GROUP LTD

Porte Marsh Road, Calne, Wiltshire, SN11 9BW

Registered in England No: 2603821

VAT Reg: GB572705729

