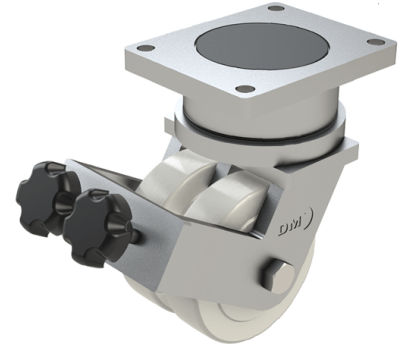


Nylon Plate Swivel Castor Brake 100mm 2000kg Load

Product code: T100NYBJDBR

POA Heavy duty fabricated twin wheel swivel castor fitted with 2 x cast machined nylon wheels with ball bearings double wheel brake, Wheel diameter 100mm, Tread width 40mm x 2, Overall height 165mm, Top plate 175mm x 140mm, Hole centres 140mm x 105mm, Load capacity 2000kg

****MANUFACTURED TO ORDER****



Diameter (mm)	100
Fixing Option	Plate
Castor Type	Swivel with Wheel Brake
Bearing Type	Ball
Plate Size (mm)	175 X 140
Hole Centres (mm)	175 X 140
Height (mm)	165
Swivel Radius (mm)	186
To Suit Fixing Bolt (mm)	14
Wheel Material	Nylon
Colour / Shore Hardness	White Nylon
Temperature Resistance	"-30 °C TO +80 °C
Tread (mm)	2 x 40
Load Capacity (kg)	2000