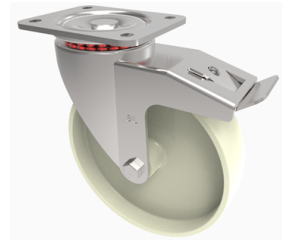


Nylon Plate Swivel Castor Brake 100mm 220kg Load

Product code: BZH100NYSWBHT



Pressed steel swivel castor with a top plate fixing fitted with a white nylon wheel with a Plain Bore and a total lock brake high temperature grease and no swivel seal. Wheel diameter 100mm, tread width 35mm, overall height 128mm, top plate 105mm x 86mm, hole centres 80mm x 60mm. Load capacity 220kg at maximum temperature 130 °C

| | |
|--------------------------|------------------------------|
| Diameter (mm) | 100 |
| Fixing Option | Plate |
| Castor Type | Swivel with Total Lock Brake |
| Plate Size (mm) | 105 x 86 |
| Hole Centres (mm) | 80 X 60 |
| To Suit Fixing Bolt (mm) | 8 |
| Height (mm) | 128 |
| Bearing Type | Plain |
| Swivel Radius (mm) | 120 |
| Wheel Material | Nylon |
| Colour / Shore Hardness | White High Temperature Nylon |
| Temperature Resistance | -30 °C to +130 °C |
| Load Capacity (kg) | 220 |
| Tread (mm) | 35 |
| Top Plate Thickness (mm) | 4 |
| Fork Thickness (mm) | 4 |