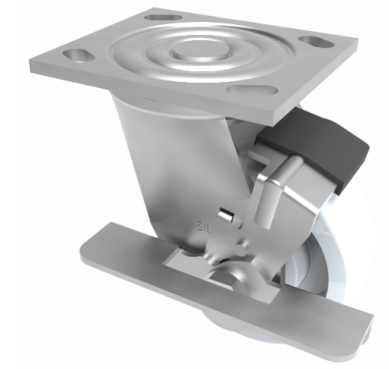


Nylon Plate Swivel Castor Brake 100mm 400kg Load

Product code: BZJ100NYBK/USA

Fabricated swivel castor with a top plate fixing fitted with a white nylon wheel with plain bore and side fitting wheel brake. Wheel diameter 100mm, tread width 35mm, overall height 143mm, top plate 115mm x 102mm, hole centres 92mm x 67mm and 76mm x 76mm. Load capacity 400kg



| | |
|--------------------------|-------------------------|
| Diameter (mm) | 100 |
| Fixing Option | Plate |
| Castor Type | Swivel with Wheel Brake |
| Bearing Type | Plain |
| Height (mm) | 143 |
| Plate Size (mm) | 115 x 102 |
| Hole Centres (mm) | 76/92 x 76/67 |
| To Suit Fixing Bolt (mm) | 10 |
| Wheel Material | Nylon |
| Colour / Shore Hardness | White Nylon |
| Temperature Resistance | -30 °C TO +80 °C |
| Top Plate Thickness (mm) | 5.5 |
| Fork Thickness (mm) | 5.5 |
| Swivel Radius (mm) | 90 |
| Load Capacity (kg) | 400 |
| Tread (mm) | 35 |