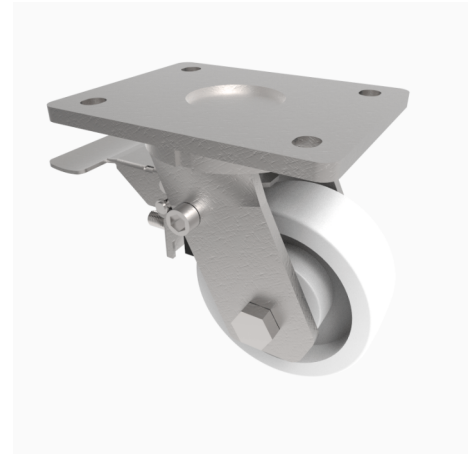


Nylon Plate Swivel Castor Brake 100mm 600kg Load

Product code: BZMJ100NYBJSWB

Fabricated white zinc ROHS plated swivel castor with a top plate fixing fitted with a white nylon centred wheel with ball bearings and total lock brake. Wheel diameter 100mm, tread width 40mm, overall height 143mm, top plate 138mm x 110mm, hole centres 105mm x 80mm/75mm. Load capacity 600kg.



| | |
|--------------------------|------------------------------|
| Diameter (mm) | 100 |
| Fixing Option | Plate |
| Castor Type | Swivel with Total Lock Brake |
| Bearing Type | Ball |
| Height (mm) | 143 |
| Plate Size (mm) | 138 x 110 |
| Hole Centres (mm) | 105 x 80/75 |
| To Suit Fixing Bolt (mm) | 10 |
| Wheel Material | Nylon |
| Colour / Shore Hardness | White Nylon |
| Temperature Resistance | -30 °C TO +80 °C |
| Top Plate Thickness (mm) | 7 |
| Fork Thickness (mm) | 6 |
| Swivel Radius (mm) | 93 |
| Load Capacity (kg) | 600 |
| Tread (mm) | 40 |

BIL GROUP LTD

Porte Marsh Road, Calne, Wiltshire, SN11 9BW

Registered in England No: 2603821

VAT Reg: GB572705729

